

May 30th, 2017



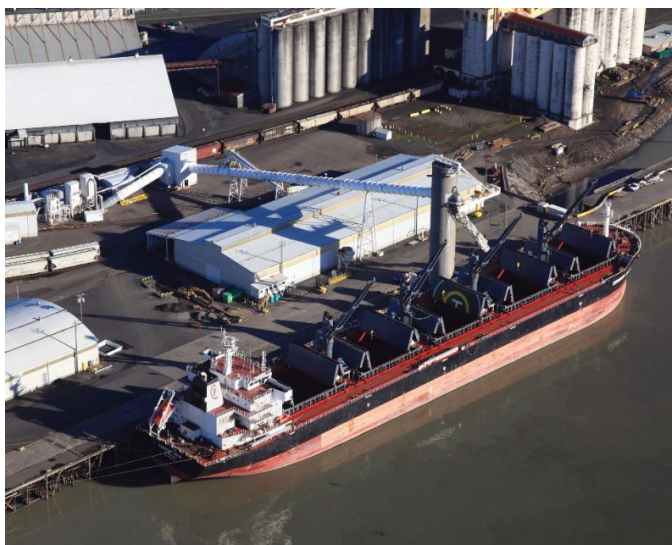
## PRESS RELEASE

### PORT CARGO OPERATIONS EXCEL IN FIRST QUARTER

*Export grains, bulks set a strong pace for 2017*

**Longview, WA**— On the heels of last year's record-setting cargo volumes, the Port of Longview continued to demonstrate its cargo-handling expertise with another strong performance in the first quarter of 2017.

The Port's actual tonnage through the end of the first quarter of 2017 was 2.4 million metric tons, representing 31% of total tonnage estimated for this year. This level of activity exceeds 2016's first quarter activity by 46%.



Dominating the tonnage reports in the first quarter were export bulk cargoes at Berth 2 and the Port's export grain terminal, EGT. At Berth 2, pot ash saw an increase of nearly 100,000 MT, due to a closure at the Port of Portland's pot ash facility. Additionally, corn and soybeans increased by 387,000 MT and 220,000 MT respectively at EGT, a trend that is expected to continue.

"This healthy volume of movement is a testament to our strong cargo-handling capabilities," said Business Development Manager Laurie Nelson-Cooley. "Our diverse cargo portfolio allows us to remain productive throughout the year, whether that's in bulk, break bulk or heavy-lift cargoes."

While first quarter volumes were dominated by bulks, the Port of Longview anticipates increases in import project cargo – such as wind energy blades and transformers – as well as continued increases from EGT and bulk commodities.

As cargo continues to be scheduled for the third and fourth quarters, the Port anticipates another strong year at Washington’s Working Port.

**MEDIA CONTACT**

Brooke Hendrickson  
Communications Associate  
[bhendrickson@portoflongview.com](mailto:bhendrickson@portoflongview.com)  
360.425.3305

###

**ABOUT THE PORT OF LONGVIEW**

The Port of Longview is the first full-service operating port with strategic transportation connections on the deep-draft Columbia River shipping channel in southwest Washington State. The Port is located just 66 river miles from the Pacific Ocean, 120 driving miles from Seattle, Washington, and 40 driving miles from Portland, Oregon. Port facilities include eight marine terminals and waterfront industrial property with direct connections to main-line rail and interstate highway. Cargo handling specialties include bulk cargos and breakbulk commodities.

10 Port Way  
Longview, WA. 98632

